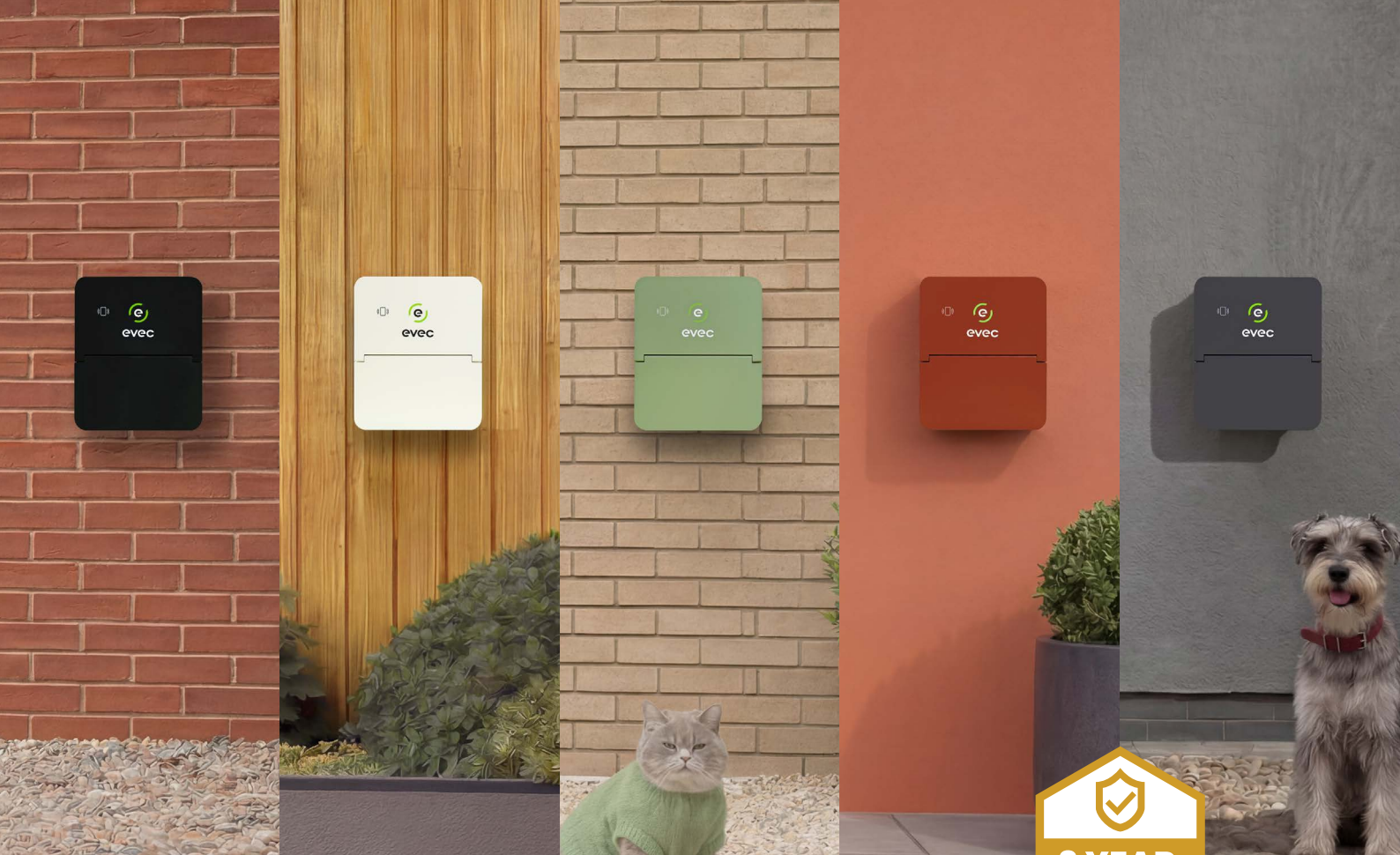


Untethered EV Charger

Datasheet

Models: VEC01-N & VEC02-N





vecGO^{2.0} your own way

Say hello to **vecGO 2.0** – the next generation of the UK’s most affordable smart EV charger for homes and businesses.

Designed to remove the barriers to going electric, vecGO 2.0 combines trusted performance with a faster, simpler installation process, intelligent smart charging, and a choice of five stunning colourways.

Built on evec’s mission to make EV ownership accessible to everyone, vecGO 2.0 delivers powerful, reliable charging without the complexity or high cost traditionally associated with EV chargers.

Upgraded for 2026 and still packed with the features customers love, vecGO 2.0 is our bestselling charger – reengineered. With improved installation speed, flexible tethered and untethered options, and reward-ready smart charging, it’s designed to fit seamlessly into everyday life.

The only hard part? Choosing your colour.



Features & Benefits

- 5 stunning colourways
- 50% faster installation*
- £140 a year in customer rewards with vecFLEX™**
- Available in tethered or untethered options
- 7.4kW – 22kW power options for homes and businesses
- OZEV approved
- Waterproof to IP55 and impact resistant to IK10
- OCPP 1.6J approved



Superfast installation

Up to 50% faster installation* for increased efficiency.



Solar integrated charging

ECO-mode enables charging with surplus solar energy.



Available as tethered model

Choose the setup that fits your space and preference.



LED charge status indicator

Track your charging status with the LED halo indicator. With less brightness to limit light pollution



Complete charging control

evec app, secure RFID or integrate with backend partners including MONTA, tap, connekt and Fuuse



Built to last, with peace of mind

Waterproof and impact resistant, backed by a 3 year warranty (extendable to 5).

*Installation time based on internal testing comparing VEC01 vs VEC01N (20 vs 9.5 minutes). Data correct as of 10/04/2026.

**vecFLEX rewards: £20 signup bonus + £10/month (£140 first year, £120 thereafter). Subject to meter eligibility, usage and market conditions.

See [evec.co.uk/vecflex-rewards](https://www.evec.co.uk/vecflex-rewards) for details.

Product Specs

Model: VEC01-N

Model: VEC02-N

Input

Power Supply	1P+N+PE	3P+N+PE
Rated Voltage	AC220~240V	AC380~415V
Rated Current	32A(16A,13A,10A adjustable)	32A(16A,13A,10A adjustable)

Output

Output Voltage	AC220~240V	AC380~415V
Max Current	32A(16A,13A,10A adjustable)	32A(16A,13A,10A adjustable)
Rated Power	7.4KW(MAX)	22KW(MAX)

Configuration

Charger Connector	Universal Socket	Universal Socket
Material	ABS +PC	ABS +PC
Colour	Black	Black
Three Colour LED	•	•
Additional Option Colours	Moonlight Cream, Deep Red, Sage Green, Anthracite Grey	Moonlight Cream, Deep Red, Sage Green, Anthracite Grey

Start Mode

Plug in & Charge	•	•
evec app	•	•
OCPP 1.6 (Ethernet)	•	•
Card Start	•	•

Product Specs (cont.)

	Model: VEC01-N	Model: VEC02-N
--	----------------	----------------

Safety

Ingress Protection	IP55	IP55
Impact Protection	IK10	IK10
Over Current Protection	•	•
Ground Protection	•	•
Surge Protection	•	•
Over/Under Voltage Protection	•	•
Over Temperature	•	•
Certification	CE/ UKCA	CE/ UKCA
Certification Standard	EN IEC 61851,EN 62196	EN IEC 61851,EN 62196
Residual Current Protection (AC30mA,DC6mA)	•	•

Environment

Installation	Wall mounted	Wall mounted
Work Temperature	-25°C~50°C	-25°C~50°C
Work Humidity	3%~95%	3%~95%
Work Altitude	<2000m	<2000m
Net Weight	2.6kg	3.15kg
Dimension	225*270*103	225*270*103
Gross Weight	3.55kg	4.1kg
Packaging Dimension	430*380*132	430*380*132

Included

evec app	•	•
OCPP 1.6J	•	•
O-PEN Protection (UK)	•	•
Electronic Lock	•	•
RFID x2	•	•
Home Power Load Balance Management	•	•

Customisable Covers

Personalise your vecGO 2.0 with interchangeable covers*, designed to suit both residential and commercial environments. Covers can be selected at purchase or changed post installation.

Available Colourways



Shadow Black



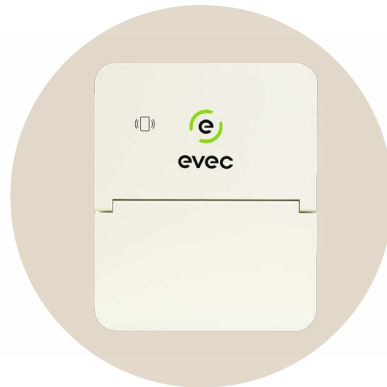
Anthracite Grey



Deep Red



Sage Green



Moonlight Cream

*shadow black cover supplied as standard. Additional covers sold separately

Additional Add Ons & Accessories

Enhance your vecGO 2.0 with optional accessories and services to suit your installation, usage, and peace of mind preferences.



Extra 2 Year Warranty

Extend the standard 3 year warranty to 5 years total.



Additional RFID Cards

Supports up to 50 cards per charger (2 included as standard).



CT Clamp

Enables advanced energy monitoring and supports dynamic load management compatibility.

You may also like...

Our 22kW tethered domestic charger, or our 22kW pedestal charger



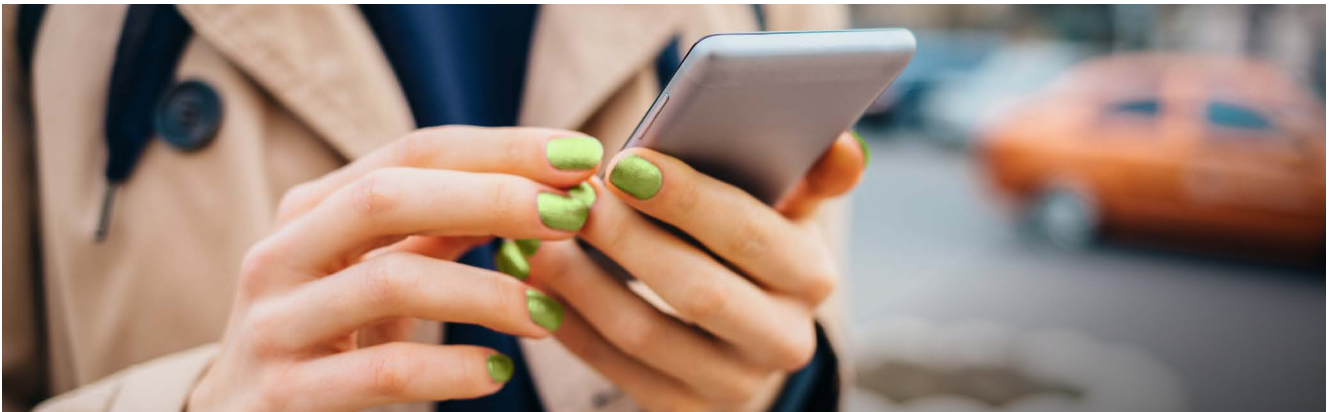
Tethered EV Charger

- ✓ Compatible with Type 1 & Type 2 EVs
- ✓ Tough & Durable
- ✓ Easy to setup and control via the evec app
- ✓ Available in 7.4kW or 22kW power options



EDP02 22kW Pedestal EV Charger

- ✓ Customisable
- ✓ Light for better visibility
- ✓ Tough & Durable
- ✓ Available in 7.4kW or 22kW power options



Monetise your charger today

- ✓ Monetise your home or business charge points easily and charge £/kWh or £/min
- ✓ Monitor users, usage, pricing and access via our backend partners





www.evec.co.uk/vecgo

0161 2496 780
sales@evec.co.uk

8 Coronet Way, Salford, Manchester, M50 1RE

